

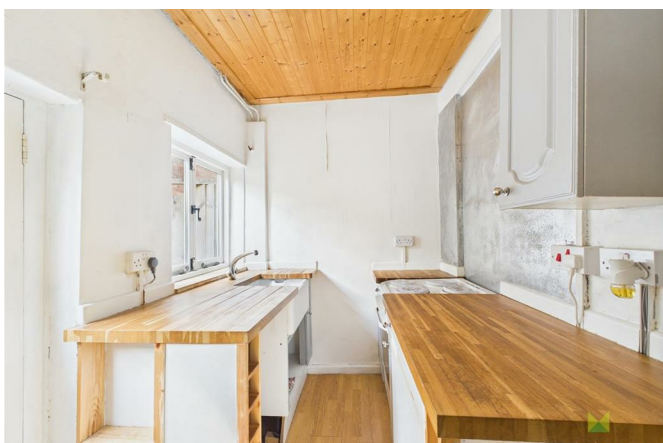
1 Hatfield Terrace Off Darwin Street Mountfields Shrewsbury SY3 8QG



1 Bedroom House
Offers In The Region Of £166,000

The features

- MUCH SOUGHT AFTER CONSERVATION AREA
- PERFECT HOME FOR A FIRST TIME BUYER
- DOUBLE BEDROOM AND LARGE BATHROOM
- VIEWING RECOMMENDED
- A SHORT STROLL FROM THE TOWN CENTRE
- LOUNGE WITH LOG BURNER, KITCHEN
- OFFERED FOR SALE WITH NO UPWARD CHAIN
- EPC RATING D



***** CHARMING 1 BEDROOM TOWN HOUSE *****

A unique opportunity to purchase this one bedroom end of terrace Town House - perfect for first time buyers or investor.

Occupying an enviable position in this much sought after Conservation area, a short stroll from the on hand amenities in Frankwell, the Town Centre and Railway Station. For commuters there is ease of access to the A5/M54 motorway network.

The accommodation briefly comprises Lounge with feature wood burning stove, Kitchen, Double Bedroom and large Bathroom and loft with velux window.

The property has the benefit of gas central heating, rear courtyard area with store.

Offered for sale with no upward chain.

Property details

LOCATION

The property occupies an enviable position in this much sought after Conservation area of Mountfields, being a stone's throw from the local amenities in Frankwell and a short walk into the Town Centre and Railway Station.

For commuters there is ease of access to the A5/M54 motorway network.

LOUNGE

Wooden entrance door opening to Lounge with sash window to the front, chimney breast housing cast iron log burner with storage to the side, quarry tiled floor, radiator.

KITCHEN

with wooden worksurface housing deep glazed Belfast style sink set into cabinet with space for washing machine. Further surface area with space for cooker, window to the rear.

FIRST FLOOR LANDING

Staircase leads to the First Floor with access to

ROOF SPACE

Useful naturally lit storage space that could be converted into a further bedroom.

BEDROOM

A good sized double room with window to the front, radiator.

BATHROOM

A generous sized room with suite comprising panelled bath with shower unit over, wash hand basin and WC. Large Linen Cupboard and additional cupboard housing gas central heating boiler. Window to the rear, radiator.

OUTSIDE

To the Front is a paved forecourt garden area. To the Rear is a small courtyard area with pedestrian gate to the side, brick built store.

GENERAL INFORMATION

TENURE

We are advised the property is Freehold and would recommend this is verified during pre-contract enquiries.

SERVICES

We are advised that mains services are connected.

COUNCIL TAX BANDING

As taken from the Gov.uk website we are advised the

property is in Band A - again we would recommend this is verified during pre-contract enquiries.

FINANCIAL SERVICES

We are delighted to work in conjunction with the highly reputable `Ellis-Ridings Mortgage Solutions' who offer FREE independent advice and have access to the whole market place of Lenders. We can arrange for a no obligation quote or please visit our website Monks.co.uk where you will find the mortgage calculator. <https://monks.co.uk/buy/mortgage-calculator/>

LEGAL SERVICES

Again we work in conjunction with many of the Counties finest Solicitors and Conveyancers. Please contact us for further details and competitive quotations.

REMOVALS

We are proud to recommend Daniel and his team at Homemaster Removals. Please contact us for further details.

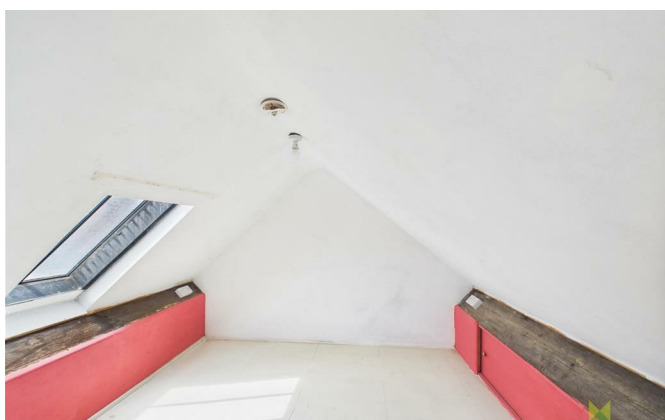
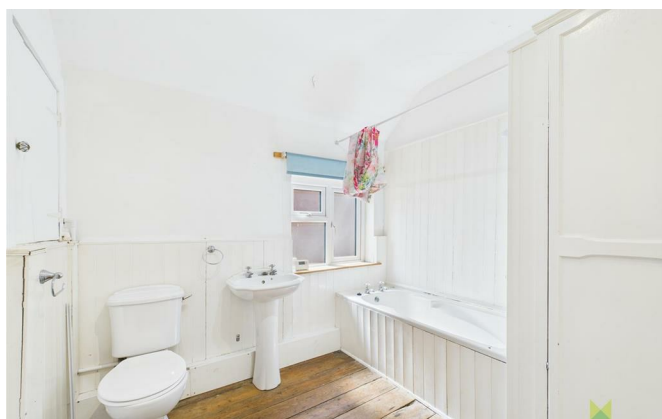
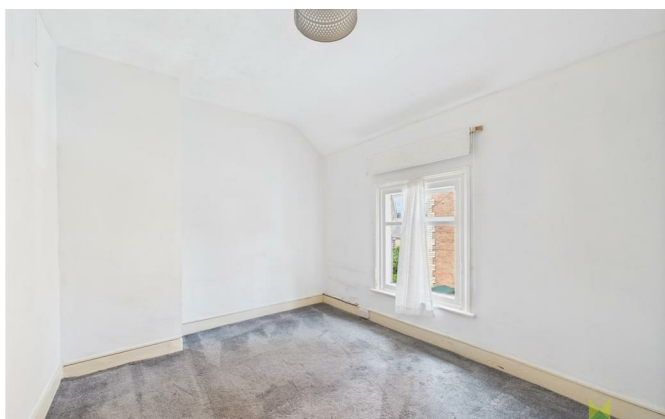
NEED TO CONTACT US

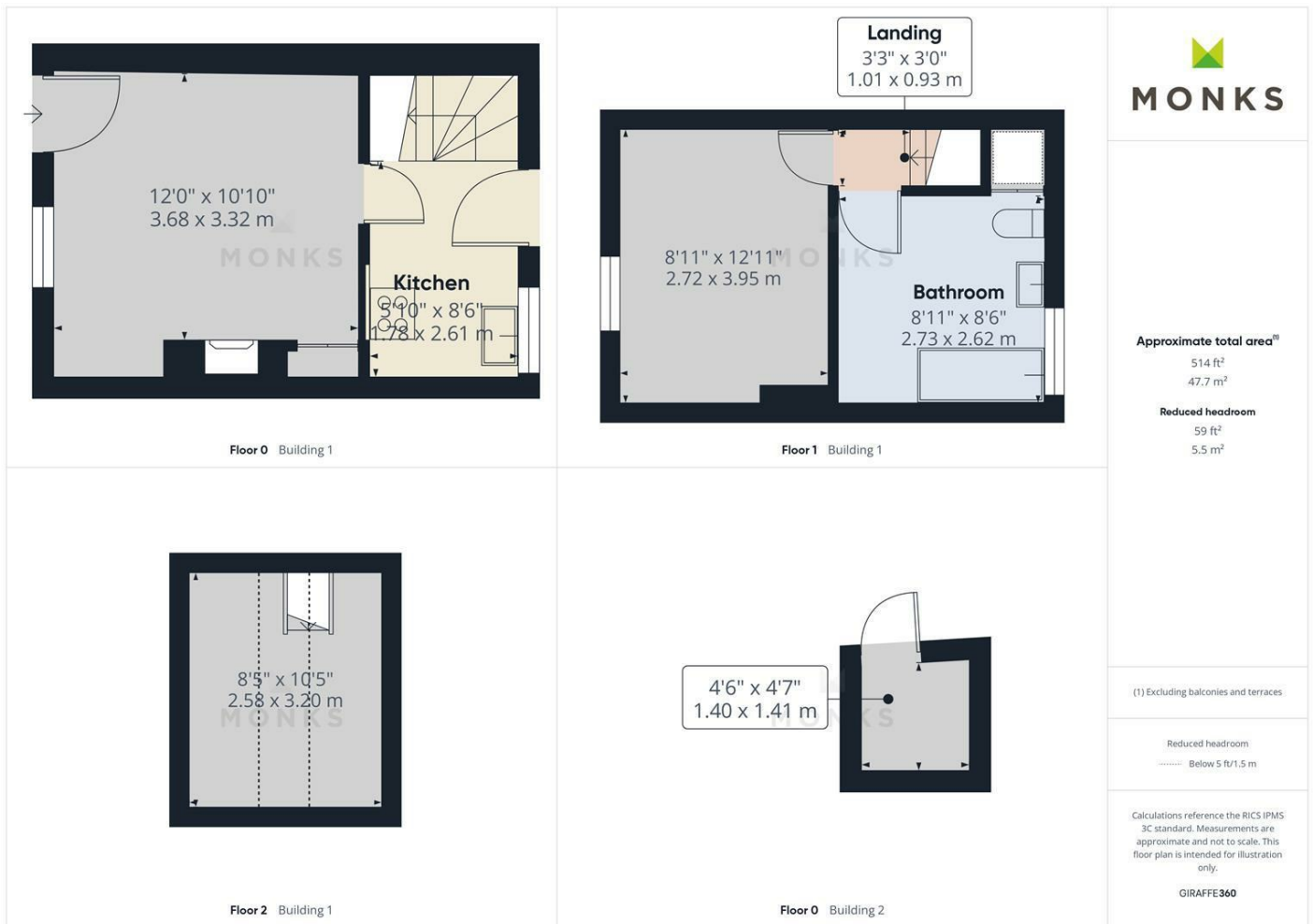
We are available 8.00am to 8.00pm Monday to Friday, 9.00 am to 4.00pm on a Saturday and 11.00am to 2.00pm on Sunday, maximising every opportunity to find your new home.

1 Hatfield Terrace Off Darwin Street, Mountfields, Shrewsbury, SY3 8QG.

1 Bedroom House

Offers In The Region Of £166,000





Judy Bourne

Director at Monks

judy@monks.co.uk

Get in touch

Call. 01743 361422

Email. info@monks.co.uk

Click. www.monks.co.uk

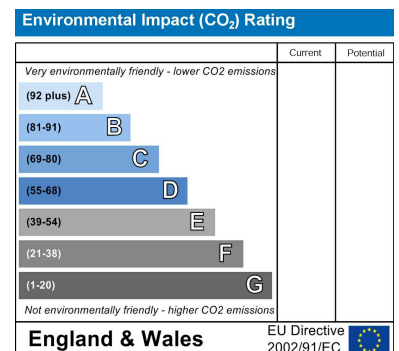
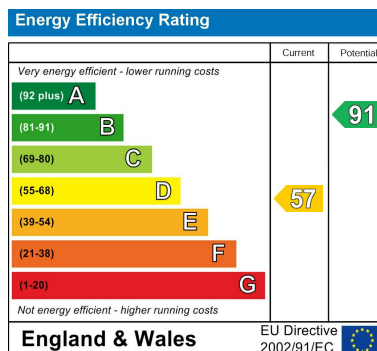
Shrewsbury office

10a-11 Shoplatch,
Shrewsbury, Shropshire, SY1

We're available 7 days a week

HOME – four words that define who,
and what we are:

Honest, Original, Motivated, Empathetic



Monks for themselves and for the vendors of this property, whose agents they are give notice that:

- These particulars provide a general outline only for the guidance of intended purchasers and do not constitute part of an offer or contract.
- All descriptions, dimensions and distances are approximate, references to state and condition, relevant permissions for use and occupation and other details are provided in good faith and believed to be correct.
- No person in the employment of Monks has any authority to make or give any representation or warranty whatever in relation to this property.
- Electrics and other appliances mentioned in these particulars have not been tested by Monks. Therefore prospective purchasers must satisfy themselves as to their working order.